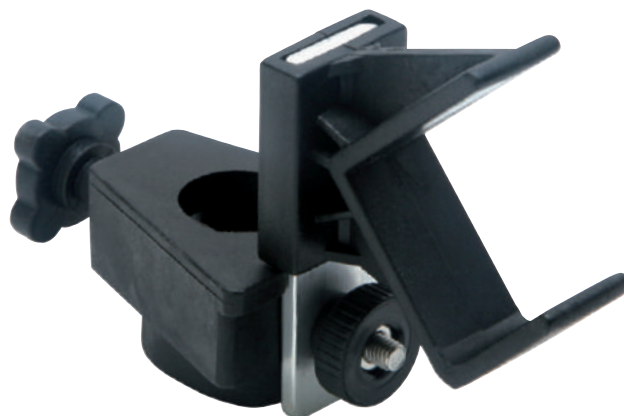


Ian Golds **HARD WEAR** ROD REST ACCESSORIES



Leg Lock Kit



Sliding Leg Head



Trace Clip



Trace Bar Leg

> SLIDING LEG HEAD

Fits all tripods. Allows rod to be kept low for flatty bashing or for fishing close in. Fitting two to front legs allows angler to lay spare rod across the front of the tripod.

> LEG LOCK

Kit Fits Super-Match range. Allows legs to be locked in position. Ideal for shallow beaches where the angler is always on the move. Also great for promenades, piers etc.

> TRACE BAR

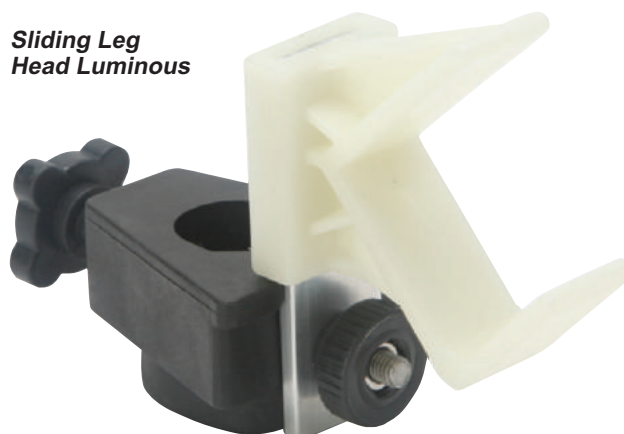
Fits all tripods. Use to hang up to 4 spare traces/rigs.

> TRACE CLIP

Fits all tripods. Adjustable clip for round legs. Use to hang up to 2 spare traces/rigs.

> SLIDING LEG HEAD LUMINOUS

Luminous version. Fits all tripods. Allows rod to be kept low for flatty bashing or for fishing close in. Fitting two to front legs allows angler to lay spare rod across the front of the tripod.



Sliding Leg Head Luminous

MODEL	DESCRIPTION	RRP
SLLHD	Sliding Leg Head	£9.99
LL1	Leg Lock Kit	£11.99
TB1	Trace Bar	£8.99
TC	Trace Clip	£3.99
SLLHDLM	Sliding Leg Head Luminous	£10.99